



ACCREDITCON

THE COLLABORATIVE
FOR ADVANCING EXCELLENCE
THROUGH ACCREDITATION



The New and Improved! CoAEMSP Annual Report



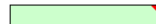
Committee on Accreditation of Educational Programs for the EMS Professions (CoAEMSP), in cooperation with the Commission on Accreditation of Allied Health Education Programs (CAAHEP)



2017 Annual Report

CoAEMSP Letter of Review (LoR) / CAAHEP Accredited (Initial and Continuing) programs must complete and submit THIS Excel annual report template no later than March 15, 2019 which will represent all cohorts that have graduated in 2017. No PDF or paper copy versions of this report will be accepted.

~ Remember ~
The filing deadline is March 15, 2019



<=== Hovering your cursor over a cell with a red triangle in upper right corner reveals text. Try it.

CoAEMSP Program #: (the 600XXX number assigned by CoAEMSP)

Sponsoring Institution:

City:

State:

Accreditation Status:

Have there been graduates for the 2017 year?



Thought for Today.....

**Accreditation is an
every day activity!**




Council for Higher Education Accreditation (CHEA)

- ❑ Recognizes higher education accrediting bodies
- ❑ Seeks to improve accreditation process
- ❑ Serves as national advocate for voluntary self-regulation through accreditation
- ❑ CAAHEP's Accreditor



A Retrospective: the CAAHEP Annual Report

- ❑ Cumulative report
- ❑ Evaluation based on a 3-year average
 - ❑ 3-year average was always a year in arrears
 - ❑ i.e., 2016 report calculated 2015+2014+2013
- ❑ Numerous challenges for PDs in data reporting
- ❑ Challenges in obtaining reports from the database
- ❑ Last CAAHEP AR was 2016 Retrospective



The screenshot shows the login interface for the CAAHEP Annual Reports Management System. The header includes the CAAHEP logo and the text 'Commission on Accreditation of Allied Health Education Programs' and 'Annual Reports Management System'. The login form contains the following elements:

- Log In** (Section Header)
- User Name:** [input field] * required
- Password:** [input field] * required
- Remember me
-
- [Forgot Password?](#)



Process

- ❑ CoAEMSP QI Committee discussed options
- ❑ Elected to develop a new tool and process
- ❑ New tool is Excel-based
- ❑ AR is completed for each year and there is no longer a cumulative average
- ❑ All programs were given a one-year 'pass' on reporting for QI review



Evolution

- ❑ Decision to use the calendar year as the reporting period
- ❑ 200 programs pilot tested the new AR format submitting data for 2017
- ❑ Pilot report was due May 1, 2018
- ❑ Pilot programs were surveyed regarding feedback/suggestions



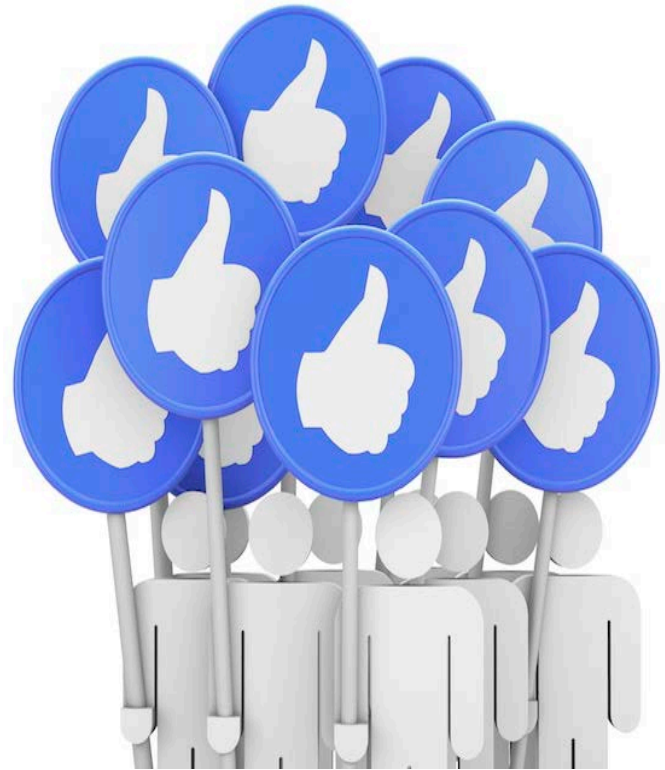
Pilot Suggestions



- ❑ Wrap around text for analysis and plan
- ❑ Regarding the math: you have to enter 0 and not leave the field blank
- ❑ On-time enrollment difficult to meet
- ❑ Allow more time for students in cohorts to complete

Pilot Testimonials

- ❑ Love this new format! More user friendly and quicker to complete
- ❑ Spreadsheet very easy to complete
- ❑ Promoted good discussion among faculty



Changes Going Forward

- **Cannot 'go back' and add graduates in the following year's report**
- **Graduates not completing 'on-time' will count as attrition**
- **However, the program can add late gradulators as a 'cohort' in the following reporting year**



2018 and Beyond

- ❑ New Annual Report for 2017 was due March 15th
- ❑ Submission year was 2019
Reporting year was 2017
- ❑ Pilot programs resubmitted the 2017 data
- ❑ The 'delay' allows Programs to account for late graduates in the reporting year
- ❑ Annual Report is now due no later than March 15th each year



2018 and Beyond

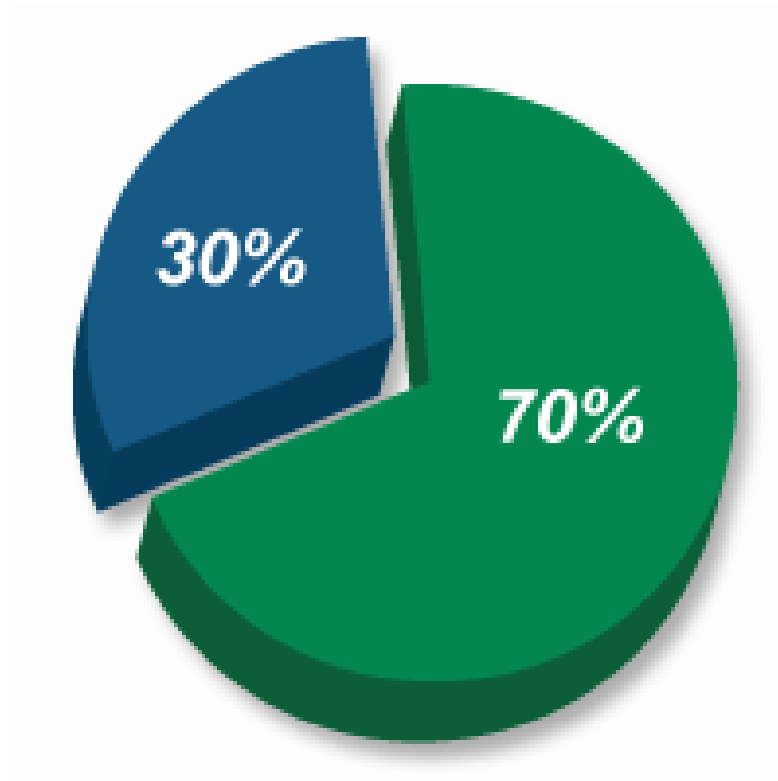
- ❑ 2016 AR = 517 programs submitted
- ❑ 2017 AR = 679 programs submitted
 - ❑ 51 programs reporting *no graduates* in 2017
- ❑ 13,213 total graduates reported

2018 and Beyond

- ❑ Outcomes thresholds measured
 - ❑ Retention: includes attrition for all reasons
 - ❑ Placement
 - ❑ Credentialing
- ❑ All thresholds are 70%
- ❑ Programs are also required to survey 100% of graduates and employers
- ❑ Programs are to analyze responses and create an action plan



Outcomes Thresholds



2018 and Beyond



- ❑ AR tool automatically calculates and color codes percentages
- ❑ Thresholds that fail to meet 70% appear in red
 - ❑ Fields appear for analysis and action plan
 - ❑ Standardized questions appear
- ❑ Additional progress reports will not be required

In Addition...

- ❑ On-time graduation defined
 - ❑ Reasonable amount of time that students should be able to complete all program components
- ❑ Students must be identified in cohorts
- ❑ Required maximum amount of time to complete a program is a common academic requirement

150%

Actions

- ❑ Potential actions do not occur until a program has continued to fall below a threshold for three consecutive years
- ❑ The results will no longer be averaged
- ❑ If a threshold is not met for the third consecutive year, the Program will be forwarded to the Board for a possible recommendation of probation



Actions



ACTIONS



RESULTS

Once on Probationary Accreditation, the Program will have up to 2 years to demonstrate compliance

If not in compliance, accreditation may be *Involuntarily Withdrawn* or program may *Voluntarily Withdraw*

Demo!

2017 Annual Report Current.xlsx



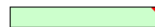
Committee on Accreditation of Educational Programs for the EMS Professions (CoAEMSP), in cooperation with the Commission on Accreditation of Allied Health Education Programs (CAAHEP)



2017 Annual Report

CoAEMSP Letter of Review (LoR) / CAAHEP Accredited (Initial and Continuing) programs must complete and submit THIS Excel annual report template no later than March 15, 2019 which will represent all cohorts that have graduated in 2017. No PDF or paper copy versions of this report will be accepted.

~ Remember ~
The filing deadline is March 15, 2019



<=== Hovering your cursor over a cell with a red triangle in upper right corner reveals text. Try it.

CoAEMSP Program #: (the 600XXX number assigned by CoAEMSP)

Sponsoring Institution:

City:

State:

Accreditation Status:

Have there been graduates for the 2017 year?



Note: Failure to

CoAEMSP

LOR Programs

- ❑ *Submit the AR*
→ LoR suspended
- ❑ *Address Suspension*
→ LoR revoked

Prevents program from re-entering the accreditation process for 3 years

CAAHEP

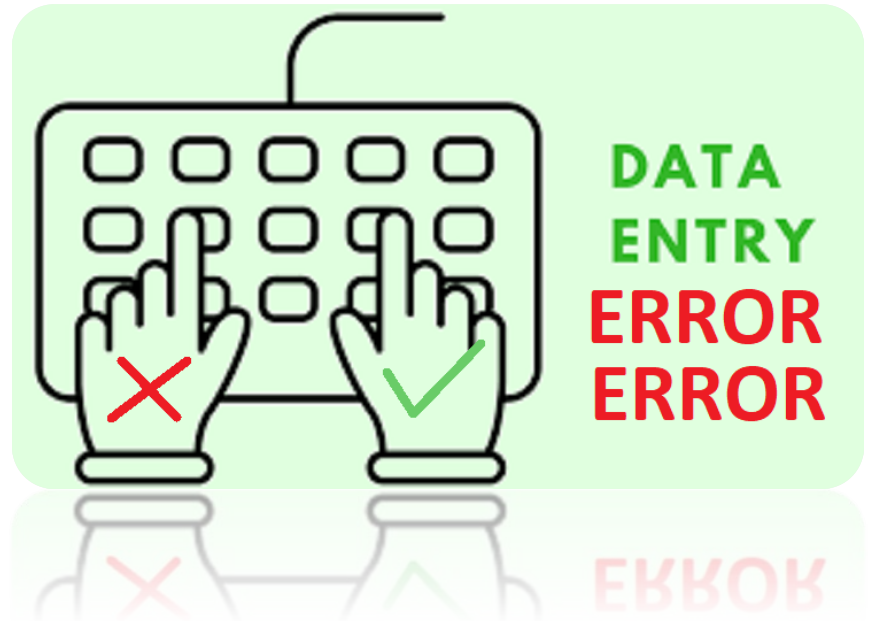
Accredited Programs

- ❑ *Submit the AR*
→ Administrative Probation
- ❑ *Address Administrative Probation*
→ may lead to Withdrawal of Accreditation



Potential Data Entry Errors

- ❑ On-time graduation dates that differ from the calendar year being reported
- ❑ Reporting numbers resulting in the outcome percentage to go above 100%
- ❑ Blank or unanswered cells



Changes for *2018* Report

- ❑ Will add row for number of graduates attempting the exam
- ❑ If not all graduates attempted there will be a field to identify why there was no attempt
- ❑ Will adjust calculation for exam pass rate and it will be based on the number attempted, not number of graduates
- ❑ Will develop a methodology to allow both state and NR but total must not exceed the number of graduates

Publishing Outcomes

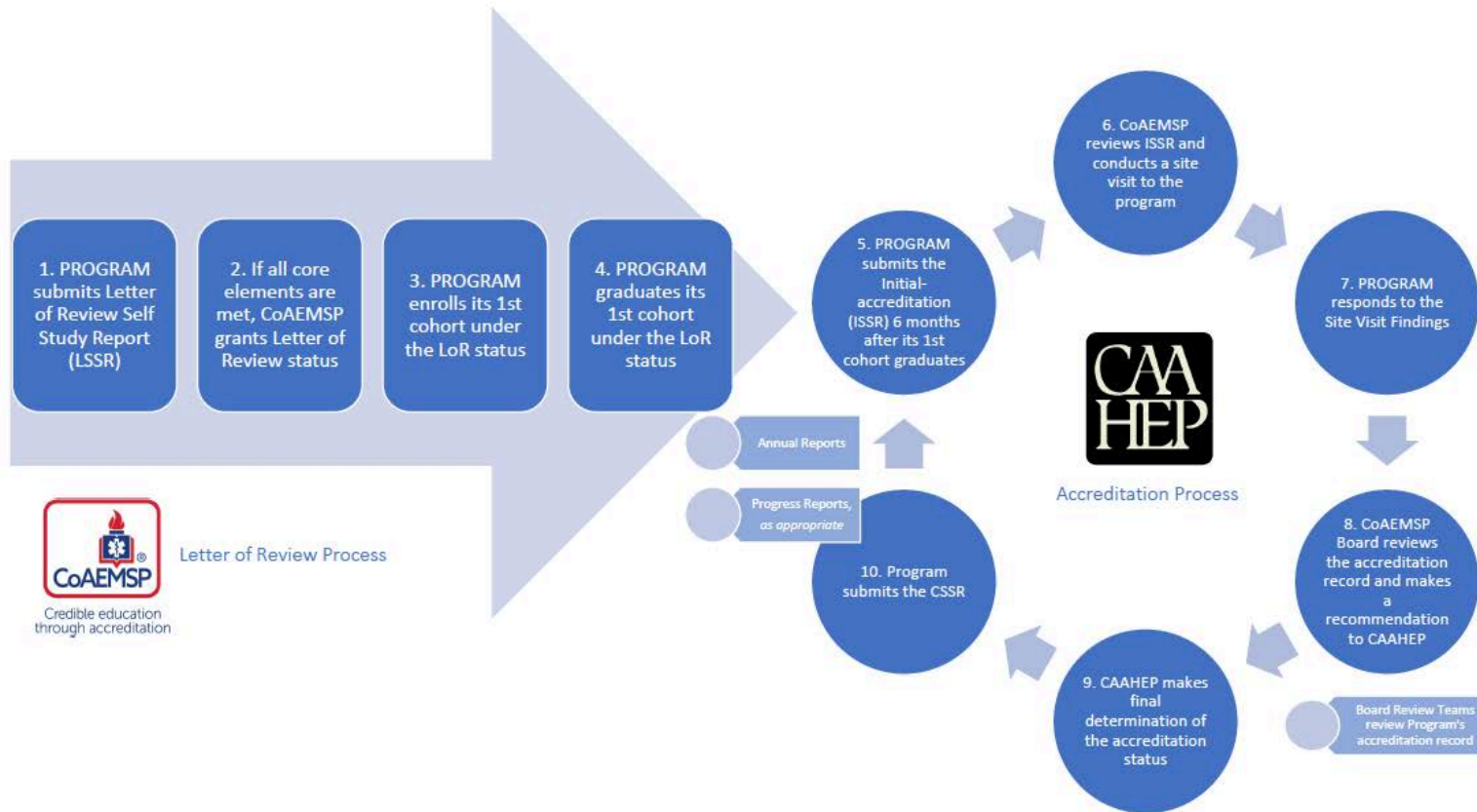
- ❑ Results must be published on the Program's website home page
- ❑ Published results must be consistent with and verifiable by the latest AR
- ❑ The published website must be listed in the AR



Accreditation is an every day activity!



The CoAEMSP Letter of Review Process and the CAAHEP Accreditation Process for Paramedic Educational Programs



Your Questions